

SSM25i Pro

On-wall/On-ceiling mountable Passive 3-way Studio Monitor

ACOUSTIC
ENGINEERS



Overview

Shallow cabinet design.

Proprietary mounting hardware inc. with product.

Can be orientated vertically (portrait) or horizontally (landscape).

Suitable for wall or ceiling mount.

Configurable mounting hardware allows flat mounting and allows the speaker to pivot towards the listening position, achieving optimal performance.

Sealed box design for controlled low frequency response when wall mounted.

Mounting/drilling template included with products.

Steel reinforced cabinet & with safety tether.

Acoustic specifications

Drive Unit – Bass: 1 x SB50-164SC 8Ω

Mid: SM75-150 16Ω

HF: 1 x SH25-76S 6Ω.

Low Frequency Cut-off: 47Hz (-6dB, anechoic)

High Frequency Cut-off: 25kHz (-6dB)

Crossover Frequency: 380Hz & 3.5kHz

Recommended Power Amplifier: 75W to 300W

Input Connectors: Binding Posts/4mm Plugs, single pair.

MaxSPL: 109dB continuous, 116dB peak, (per pair, IEC weighted Pink Noise, 1m anechoic)

Sensitivity: 85dB/W @1m

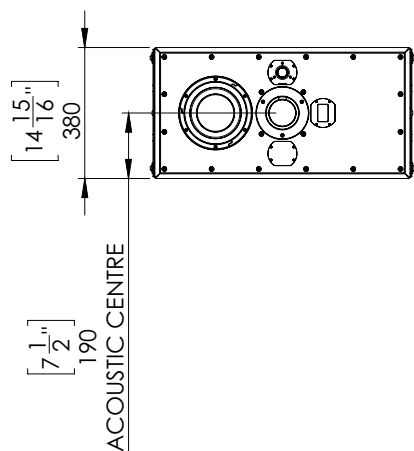
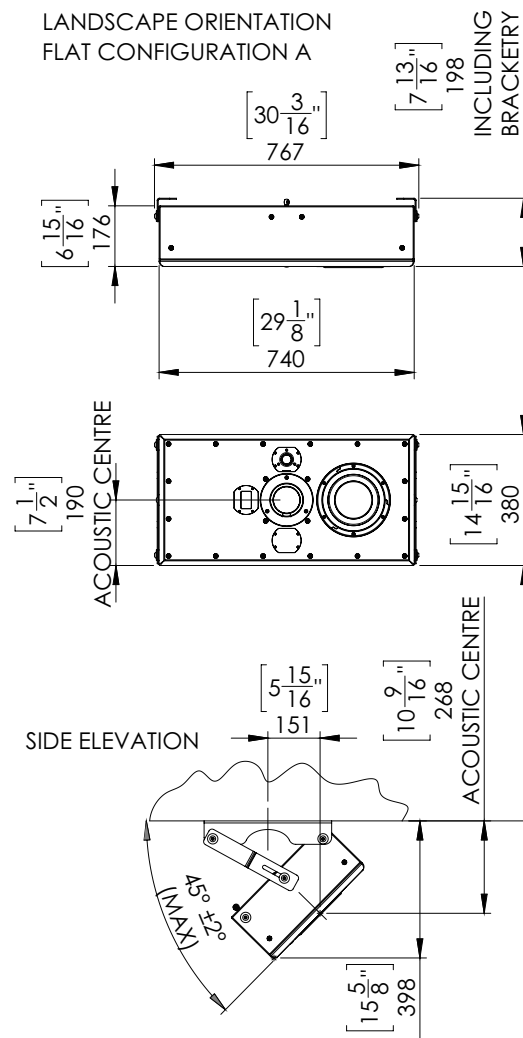
Nominal Impedance: 8Ω

Minimum Impedance: 5Ω

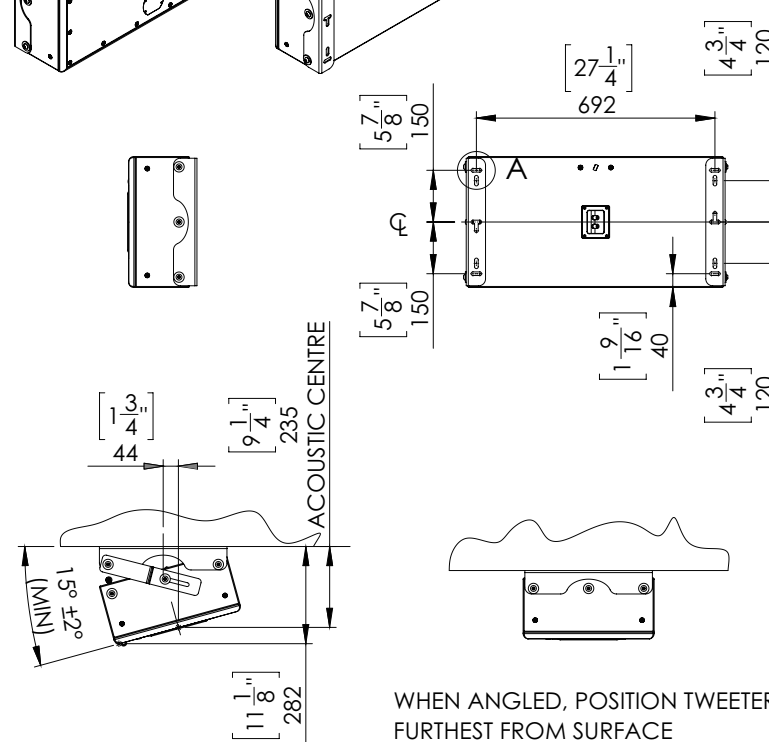
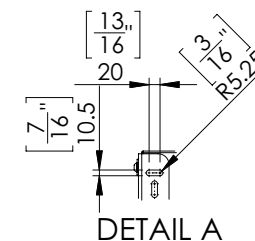
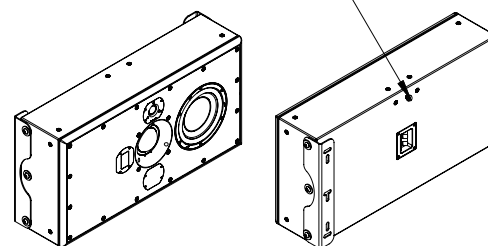
Physical specifications

Net Weight: 28.2kg / 62.2lbs.

See following page for physical specifications.

SSM25i Pro**On-wall/On-ceiling mountable Passive 3-way Studio Monitor**LANDSCAPE ORIENTATION
FLAT CONFIGURATION BLANDSCAPE ORIENTATION
FLAT CONFIGURATION A

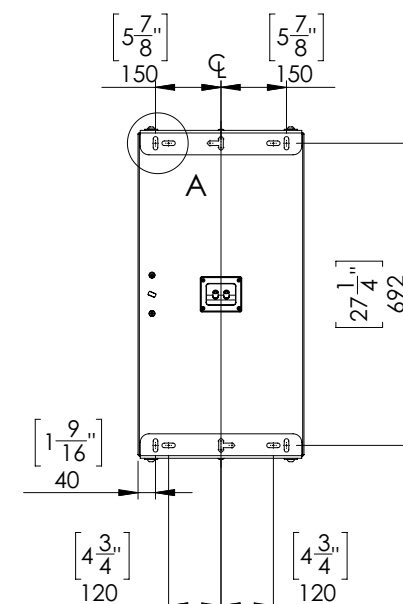
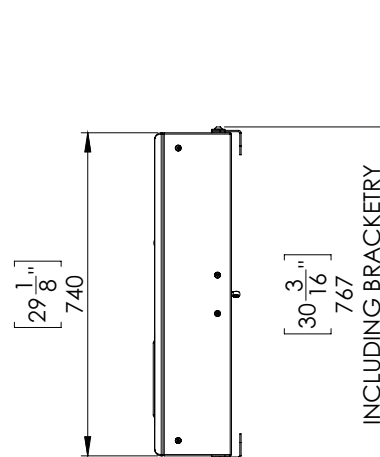
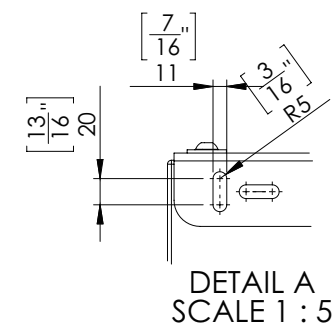
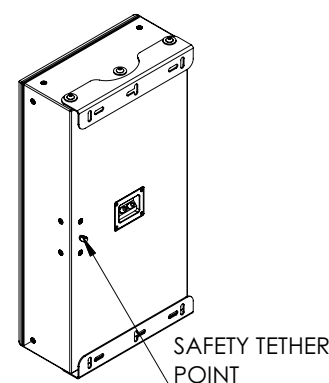
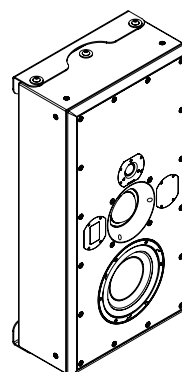
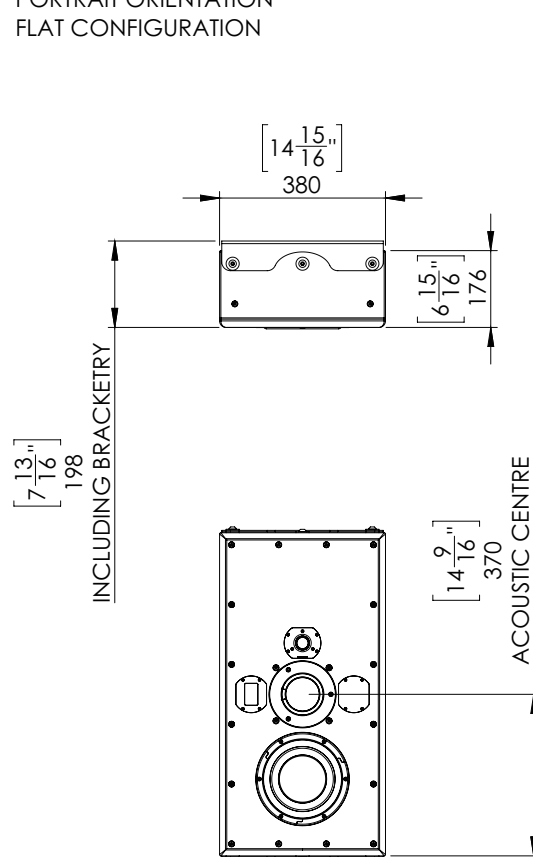
SAFETY TETHER POINT



SSM25i Pro

On-wall/On-ceiling mountable Passive 3-way Studio Monitor

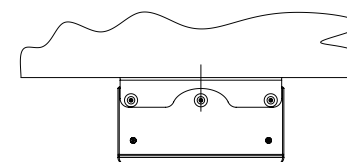
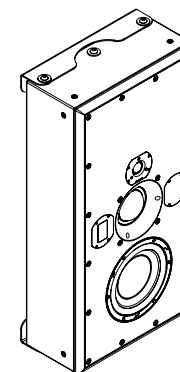
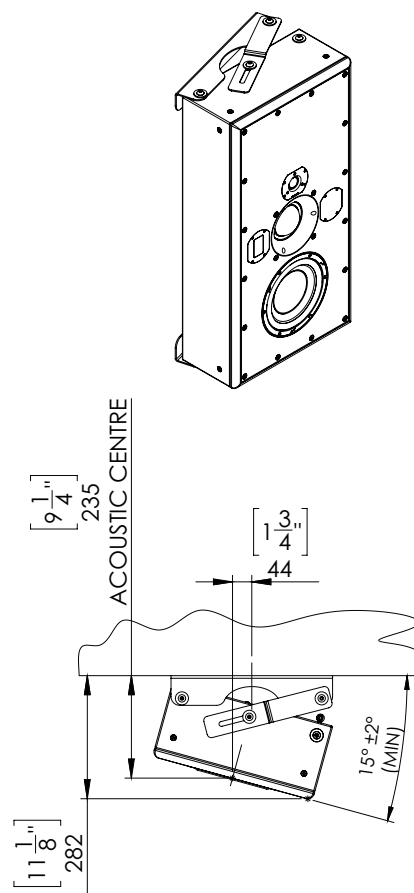
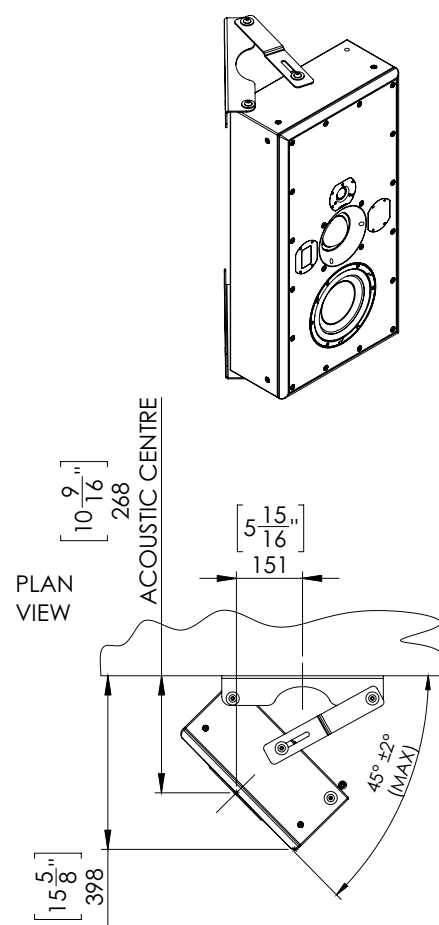
PORTRAIT ORIENTATION
FLAT CONFIGURATION



SSM25i Pro

On-wall/On-ceiling mountable Passive 3-way Studio Monitor

PORTRAIT ORIENTATION
ANGLED CONFIGURATION



WHEN ANGLED, POSITION TWEETER FURTHEST
FROM SURFACE