

## SSM12i Pro

On-wall/On-ceiling mountable Passive 2-way Studio Monitor

ACOUSTIC  
ENGINEERS



### Overview

Shallow cabinet design.

Proprietary mounting hardware inc. with product.

Can be orientated vertically (portrait) or horizontally (landscape).

Suitable for wall or ceiling mount.

Configurable mounting hardware allows flat mounting and allows the speaker to pivot towards the listening position, achieving optimal performance.

Sealed box design for controlled low frequency response when wall mounted.

Mounting/drilling template included with products.

### Acoustic specifications

Drive Unit – Bass/Mid: 1 x SB45-150CLD 8Ω

HF: 1 x SH25-76 6Ω.

Low Frequency Cut-off: 56Hz (-6dB, anechoic).

High Frequency Cut-off: 22kHz (-6dB).

Crossover Frequency: 2.2kHz.

Recommended Power Amplifier: 75W to 300W.

Input Connectors: Binding Posts/4mm Plugs, single pair

MaxSPL: 108dB continuous, 114peak, (per pair, IEC weighted Pink Noise, 1m anechoic).

Sensitivity: 85dB/W @1m.

Nominal Impedance: 8Ω.

Minimum Impedance: 5Ω.

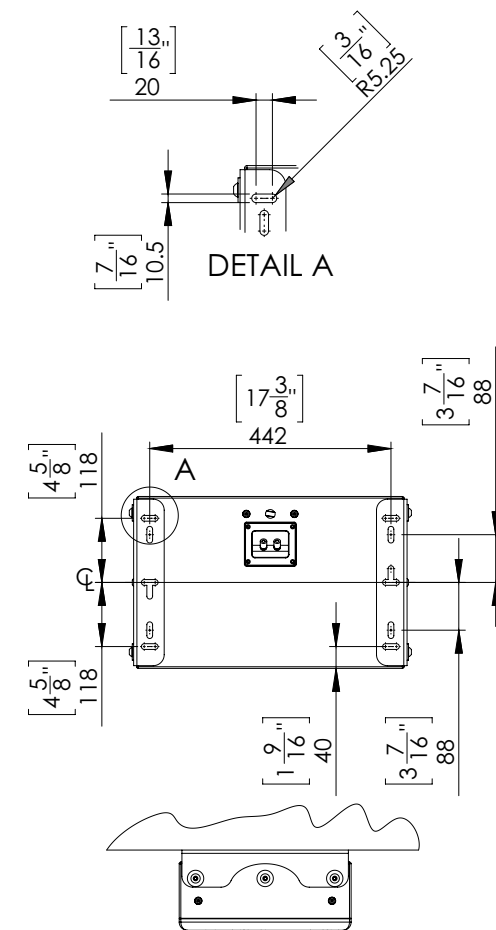
### Physical specifications

Net Weight: 14.8kg / 32.6lbs.

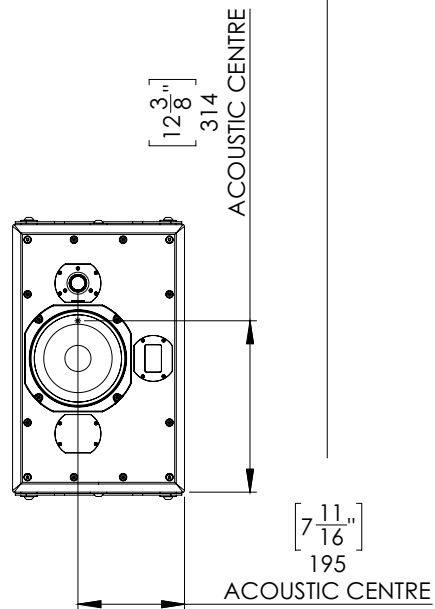
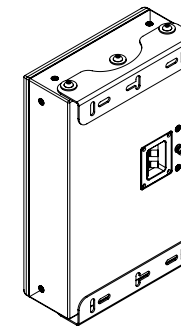
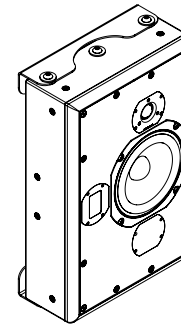
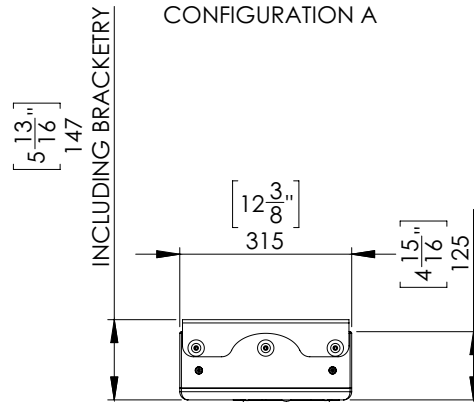
See following pages for physical specifications.

ATC reserve the right to change specifications without prior notice  
Acoustic Transducer Co. Is a trading name and ATC is the registered Trade Mark  
of Loudspeaker Technology Ltd.

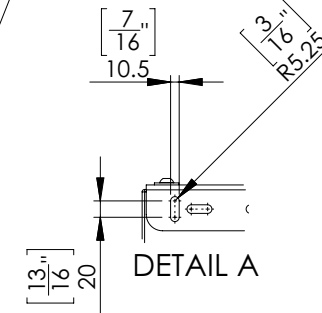
ATC reserve the right to change specifications without prior notice  
Acoustic Transducer Co. Is a trading name and ATC is the registered Trade Mark  
of Loudspeaker Technology Ltd.



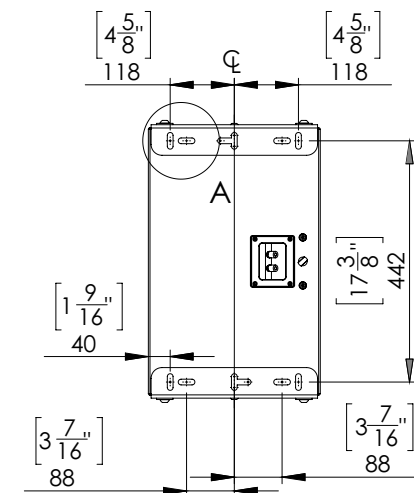
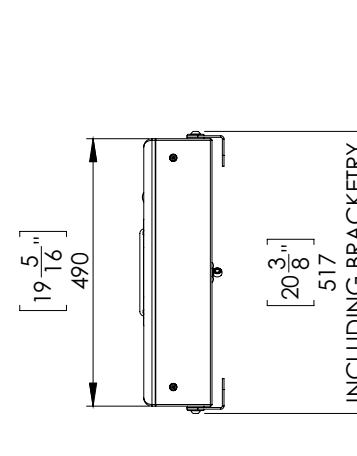
WHEN ANGLED, POSITION TWEETER FURTHEST FROM SURFACE

**SSM12i Pro****On-wall/On-ceiling mountable Passive 2-way Studio Monitor**PORTRAIT ORIENTATION FLAT  
CONFIGURATION BPORTRAIT ORIENTATION FLAT  
CONFIGURATION A

SAFETY TETHER POINT



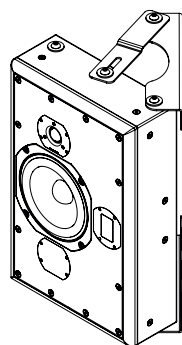
DETAIL A



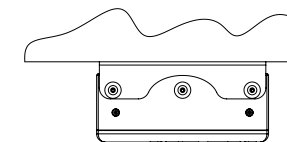
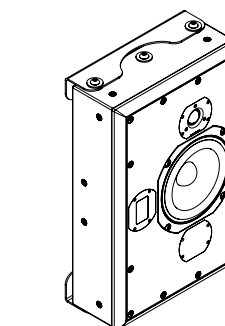
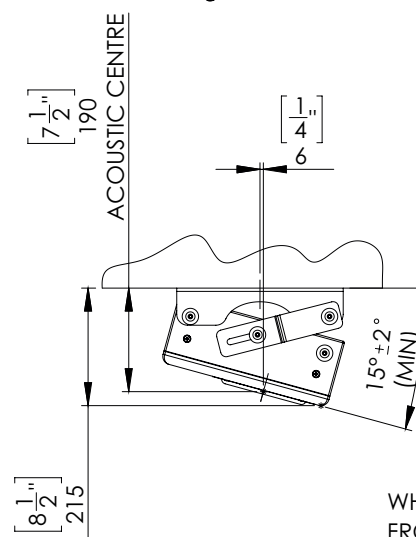
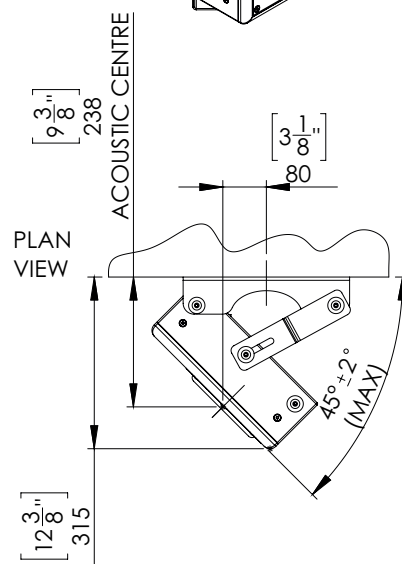
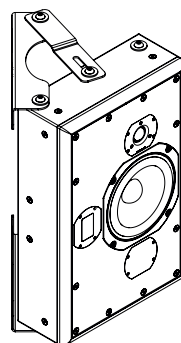
# SSM12i Pro

On-wall/On-ceiling mountable Passive 2-way Studio Monitor

PORTRAIT ORIENTATION  
ANGLED CONFIGURATION B



PORTRAIT ORIENTATION  
ANGLED CONFIGURATION A



WHEN ANGLED, POSITION TWEETER FURTHEST  
FROM SURFACE