

SCM25Ai Pro *Mk2*

Compact Active 3-way Studio Monitor

Overview

Compact high performance 3-way studio monitor suitable for installed applications.

Install specific cabinet with internal steel reinforcement.

2 x M10 side panel mounting points, 4 x M8 rear panel mounting points and rear panel safety tether point.

1-channel, 2-channel & 3-channel 19" rack mount remote amp options.

Reinforced wall/ceiling bracket mount compatible cabinet.

Suitable for use in stereo, surround and immersive audio applications.

Free-standing version with on-board amp also available – SCM25A Pro Mk2.

Acoustic specifications

Drive Units: Bass: 1 x SB50-164SC (8Ω, Install).

Mid: 1 x SM75-150 (16Ω, Install).

HF: 1 x SH25-76S (6Ω, Install, Compact).

Low Frequency Cut-off: 47Hz (-6dB, anechoic).

High Frequency Cut-off: 25kHz (-6dB).

MaxSPL: 109dB continuous, 115dB peak (per pair, IEC Weighted Pink Noise, 1m, anechoic).

Sensitivity: -15dBu ref 85dBC (per single unit, 1m, pink noise, bass boost 0dB, input sensitivity 1V/2.2dBu).

Speaker Level Input: 1 x Rear Panel Mounted Neutrik NL8.

Power/Clip LED Input: 1 x Rear Panel Mounted 5-Pin Female XLR.

Electronic Specifications

See data for chosen remote amplifier; selected from: R1-234 Pro (1-channel, 6U).

R2-234 Pro (2-channel, 5U).

R3-234 Pro (3-channel, 5U).

Physical specifications

Compatible wall/ceiling mounts:

Adaptive Technologies – MM-022-BT, MM-024-BT, MM-060, MM-018, MM-3RDX-18, AJ-1524-BT.

Konig & Meyer (K&M) – 24481 wall mount, 24496 ceiling mount, 24352 adapter panel1.

Note! Mounting solutions from other manufacturers may be available.

See following page for further details.

SCM25Ai Pro Mk2

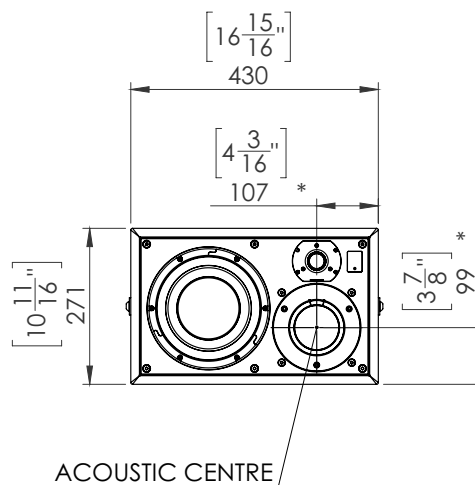
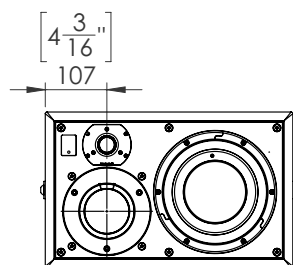
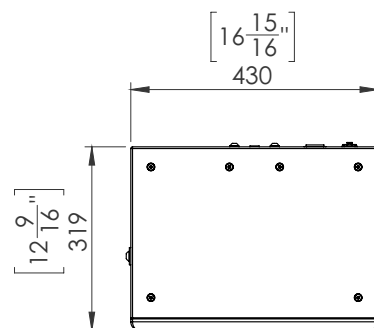
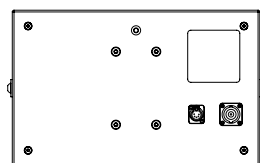
Compact Active 3-way Studio Monitor

Net Weight: 19.3kg/42.5lbs.

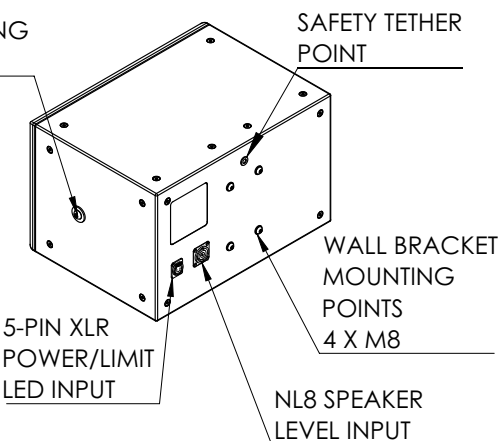
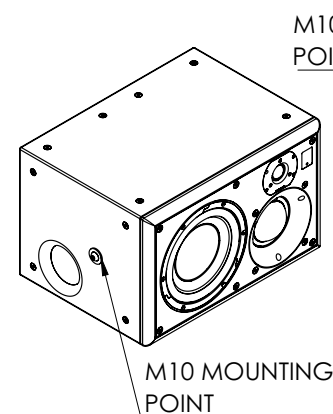
Dimensions...

SCM25Ai PRO MK2

RIGHT SPEAKER



LEFT SPEAKER



SUPPLIED IN MIRROR IMAGE PAIRS.
SINGLE SPEAKERS AVAILABLE AS 'LEFT-HAND' OR 'RIGHT-HAND' UNITS
* ACOUSTIC CENTRE

