

**SCM25ATH Pro** *Mk2***Compact Active 3-way Wall-Bracket Mount Studio Monitor**ACOUSTIC  
ENGINEERS**Overview**

Compact high performance 3-way wall-bracket mount studio monitor:

Metal 'top-hat' mount in cabinet base.

Wall-mountable using K&M 24120 pan/tilt bracket\*

On-board 242W convection cooled discrete MOSFET class A/B amplifier:

1 x balanced XLR input.

User adjustable bass boost and input sensitivity.

Suitable for use in stereo, surround and immersive audio applications.

Nearfield variant available – SCM25A Pro Mk2.

Install variant with remote amplifier also available – SCM25Ai Pro Mk2.

\*bracket sold separately

**Acoustic specifications**

Drive Units: Bass: 1 x SB50-164SC 8Ω

Mid: 1 x SM75-150 16Ω

HF: 1 x SH25-76S 6Ω Compact.

Low Frequency Cut-off: 47Hz (-6dB, anechoic).

High Frequency Cut-off: 25kHz (-6dB).

MaxSPL: 109dB continuous, 115dB peak (per pair, IEC Weighted Pink Noise, 1m, anechoic).

Sensitivity: 85dB/C ref. -15dBu (per single unit, 1m, pink noise, bass boost 0dB, sensitivity 2.2dBu/1V).

**Electronic specifications**

Balanced Input: 1 x Rear Panel Mounted Female XLR, pin 2 hot.

Input Impedance: 20kΩ (differential).

Input CMRR: 82dB at (10kHz).

Input Sensitivity: 2.2dBu/1Vrms for full power:

Input Sensitivity Control: Continuously Variable from 2.2dBu – 8.2dBu/1Vrms – 2Vrms (-6dB).

Bass Boost Control: Continuously variable from 0dB to +3dB.

Crossover Filters: 4th Order Linkwitz Riley at 380Hz and 3.5kHz.

Frequency Response: <2Hz to >200kHz (-3dB).

Amplifier type: Grounded Source MOSFET based Class A/B, convection cooled.

Output Power: Bass 150W into (8Ω), Mid 60W into (8Ω), HF 32W into (6Ω).

THD+N: <0.003%/-92dB (1kHz, 1dB below rated power; 90kHz BW).

Limiter: ATC Active FET Momentary Gain Reduction, active limiter indicated via front panel LED.

Mains Input: 220-230V or 115V – Factory set. Please observe panel markings and labels!

Power Consumption: Idle 24W/35VA. 1/8th Power 117W/159VA. Full Power 255W/324VA.

Heat Output: Idle 82BTU/hr. 1/8th power 335 BTU/hr. Full Power 358BTU/hr.

**Physical specifications**

Net Weight: 25.4kg/55.9lbs.

Product Dimensions: 271 x 430 x 411mm / 10 11/16th" x 16 15/16th" x 16 3/16th" (H x W x D).

Mounted Range of Adjustment: Left/right pan: +/- 48° continuously variable (limited by cabinet fouling wall)

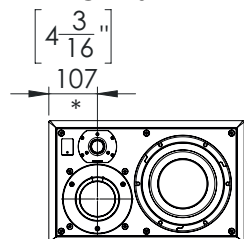
Vertical tilt: Horizontal to -22° (down) in 11 increments (limited by bracket).

See drawing on following page for full details.

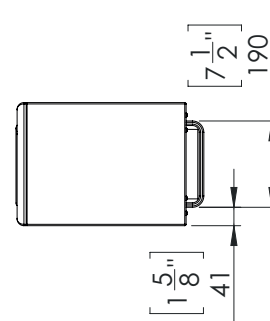
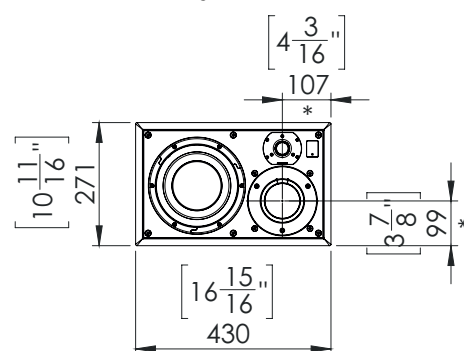
**SCM25ATH Pro Mk2****Compact Active 3-way Wall-Bracket Mount Studio Monitor**

ATC reserve the right to change specifications without prior notice  
Acoustic Transducer Co. is a trading name and ATC is the registered Trade Mark  
of Loudspeaker Technology Ltd.

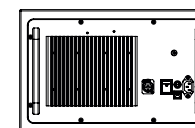
RIGHT SPEAKER



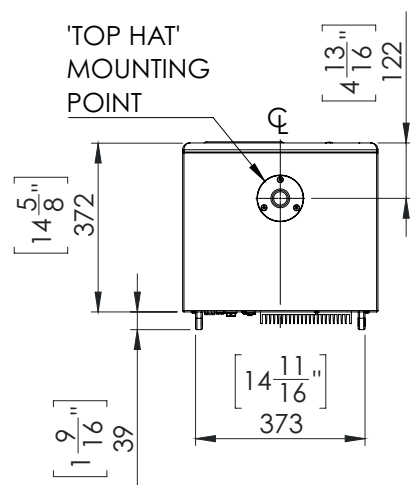
LEFT SPEAKER



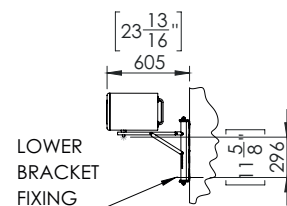
SCM25ATH PRO MK2



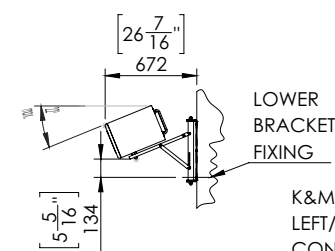
- SUPPLIED IN MIRROR IMAGE PAIRS.
- SINGLE SPEAKERS AVAILABLE AS 'LEFT-HAND' OR 'RIGHT-HAND' UNITS.
- \* ACOUSTIC CENTRE.
- K&M 24120 BRACKET SOLD SEPARATELY.



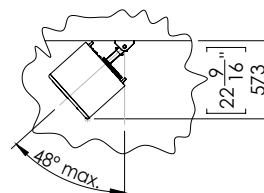
ELEVATION - BRACKET HORIZONTAL



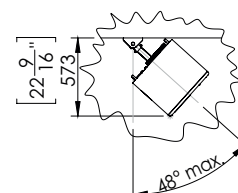
ELEVATION - BRACKET TILTED DOWN



PLAN - BRACKET RIGHT PAN



PLAN - BRACKET LEFT PAN



K&M 24120 BRACKET.  
LEFT/RIGHT PAN  
CONTINUOUSLY VARIABLE +/-48°.  
VERTICAL TILT 0° TO -22° (DOWN)  
IN 11 FIXED STEPS.

FOR DETAILED MOUNTING  
INSTRUCTIONS PLEASE CONSULT  
THE K&M 24120 INSTALL MANUAL.